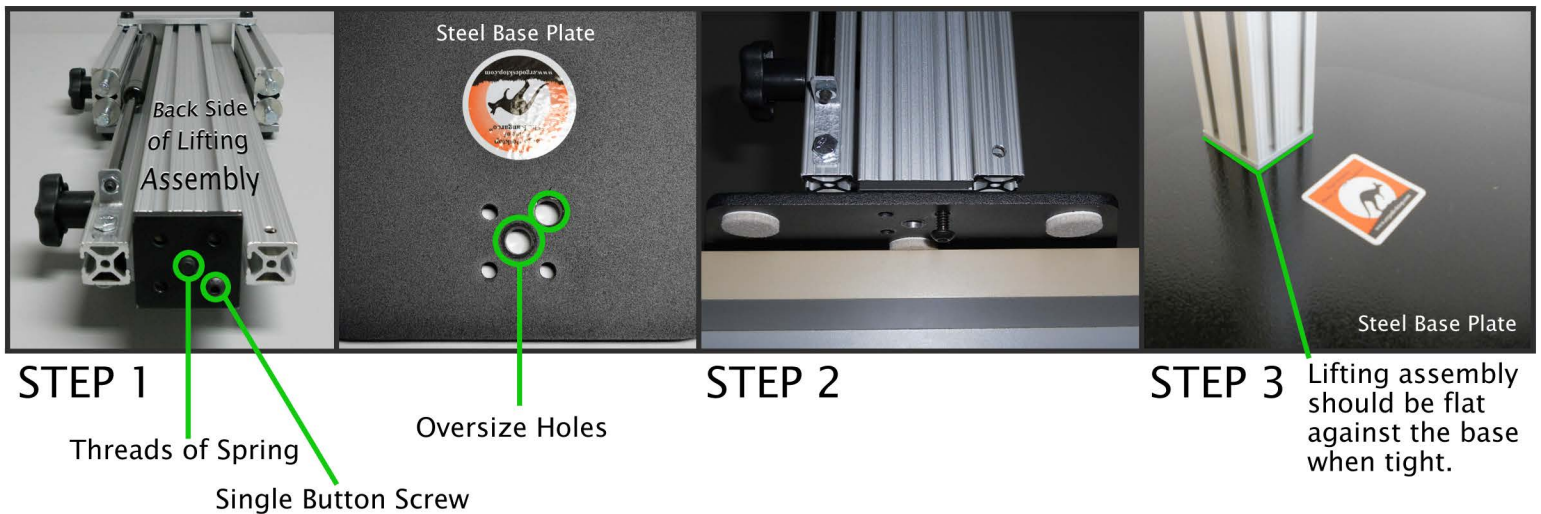
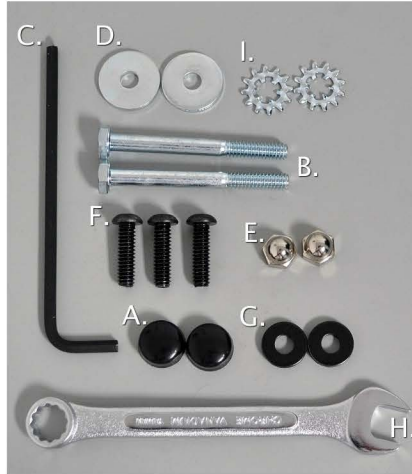


THE KANGAROO PRO JUNIOR – ASSEMBLY INSTRUCTIONS

ASSEMBLY PARTS LIST

- A. (2) Black Screw Covers
- B. (2) 1/4-20 x 2.50 Hex Head Bolts
- C. (1) 5/32 Allen Wrench
- D. (2) Fender Washers
- E. (2) Acorn Nuts
- F. (3) 1/4-20 x 7/8 BHCS
- G. (2) Thick Black Washers
- H. (1) 7/16 Wrench
- I. (2) Locking Star Washers



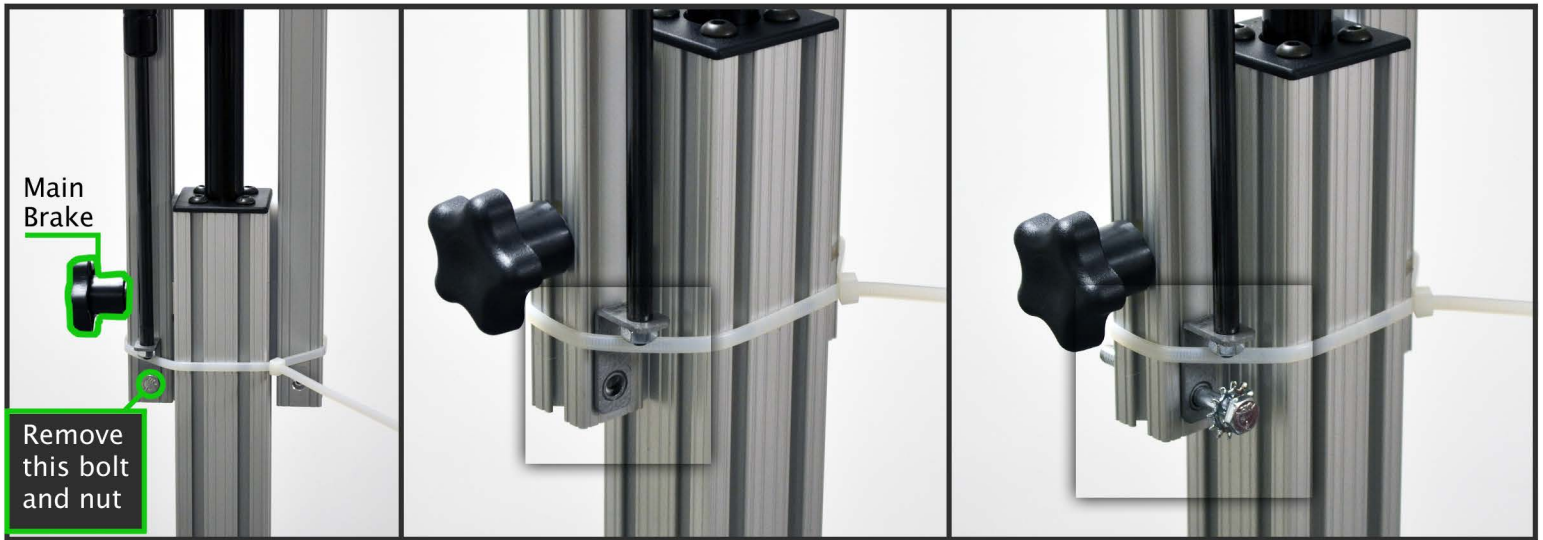
Step 1: Lay the Lifting Assembly on a solid surface with the back side up as shown. Notice the single Button Head Bolt and the threads of the spring in the assembly union. **DO NOT LOOSEN THE SINGLE BUTTON HEAD BOLT.**

Now notice the (2) oversized holes in the base plate. The Single Button Head Screw and the Threads of the Spring will go into these oversized holes.

Step 2: With the Base Plate over hanging the table about 2 inches, hold the Lifting Assembly above the Base Plate and align the Single Button Bolt and the Spring Threads into the oversized holes.

Step 3: Insert and thread the (3) 1/4-20 x 7/8 BHCS through the Base Plate and into the Lifting Assembly. Once all (3) bolts are threaded in, tighten securely with the 5/32 allen wrench. Lifting Assembly should be flat against the Base.

THE KANGAROO PRO JUNIOR – ASSEMBLY INSTRUCTIONS



STEP 4,5,6

STEP 7

STEP 8

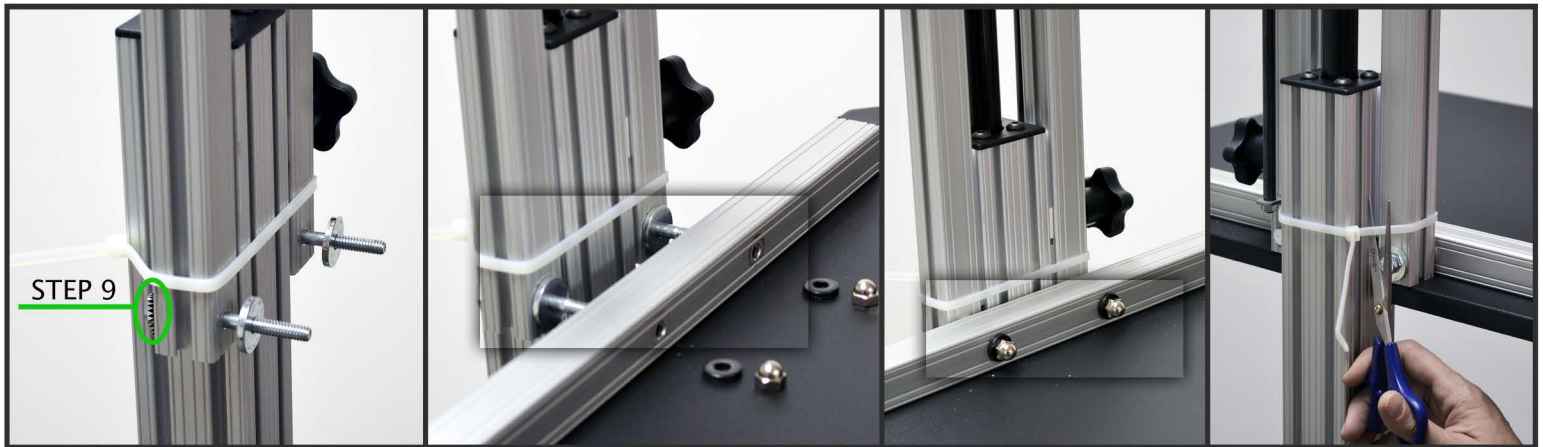
Step 4: Loosen the main brake and the monitor brake and allow the lifting assemblies to extend completely.

Step 5: Re-tighten both brakes.

Step 6: Remove the single bolt and nut that holds the upper spring bracket in place.

Step 7: After removing the bolt and nut in step 6 it should look like this.

Step 8: Put 1 Locking Star Washer on one of the 1/4-20 x 2.5 Hex Head screws. Then slide the Hex Head screw through the spring bracket and vertical rail as shown.



STEP 10

STEP 11

STEP 12

STEP 13

Step 9: Put 1 Locking Star Washer on the other 1/4-20 x 2.50 Hex Head Bolt and push it through the vertical rail so the threads show on the front of the lifting assembly.

Step 10: Put 1 fender washer on each of the 1/4-20 x 2.50 Hex Head Bolts.

Step 11: Lift the Main Work Surface and guide the bolts through the holes in the horizontal rail.

Step 12: Put on Thick Black Washers and Acorn Nuts. Tighten with the 7/16 wrench.

Step 13: Cut the zip tie holding the vertical assembly together.

THE KANGAROO PRO JUNIOR

HOW TO INSTALL YOUR MONITOR — attaching your monitor to the Ergo Desktop mount, 5/32 allen wrench and M4 screws provided

1.



2.



3.



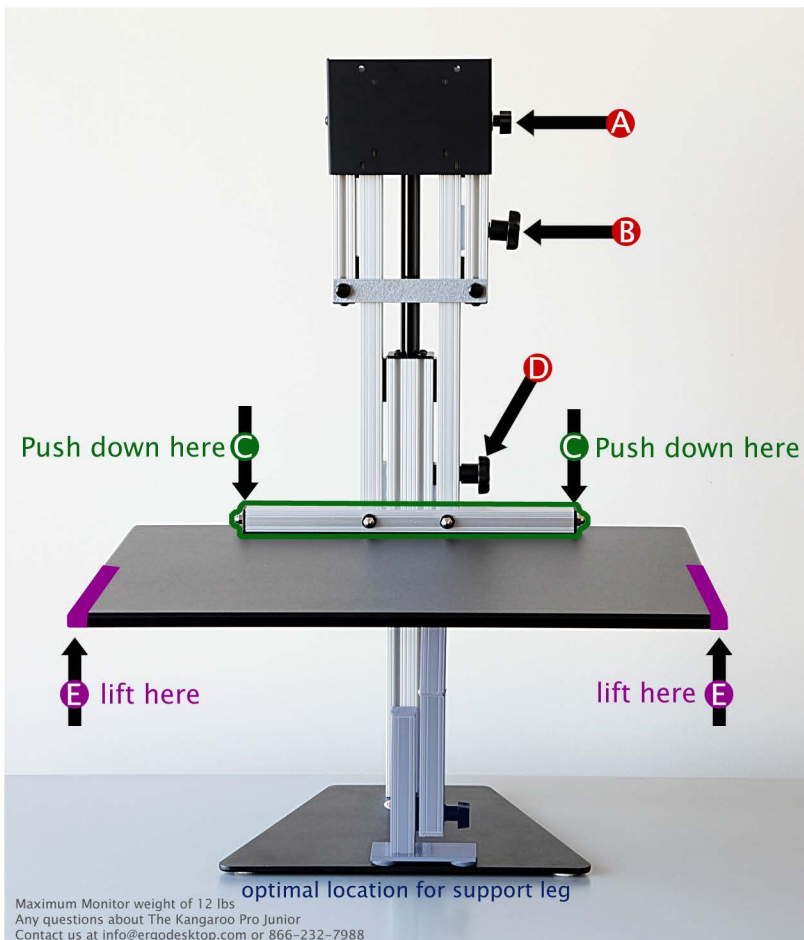
4.



5.



6.



HOW TO USE THE PRO JUNIOR

To raise the Pro Junior, loosen the main brake(D) and lift the main work surface on the sides(E & E). After reaching the desired height, tighten the work surface brake. Loosen the monitor brake(B) and raise the monitor. After reaching the desired height tighten the monitor brake. Place the stabilization leg included with your unit, between the work surface and steel base plate.

To lower the Junior, remove the stabilization leg, loosen the main brake(D) and lean into the unit using your upper body weight pushing down with both hands on the horizontal bar at the rear of the main horizontal work surface (C & C). After the Work Surface is lowered, tighten the work surface brake(D) and loosen the monitor brake(B). Lower the monitor to the desired height then tighten the monitor brake.

A. Mount Brake – controls tilt

B. Monitor Brake

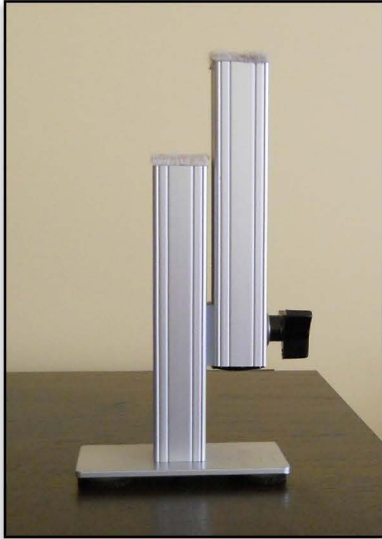
C. Work Surface Rail

D. Main Brake

E. Main Work Surface



THE STABILIZATION LEG



Your adjustable height desk unit comes with an adjustable leg that can be used to give you maximum stability when you are using “The Kangaroo” in the standing position.

Raise The Kangaroo work surface to your desired standing height and tighten the work surface brake.

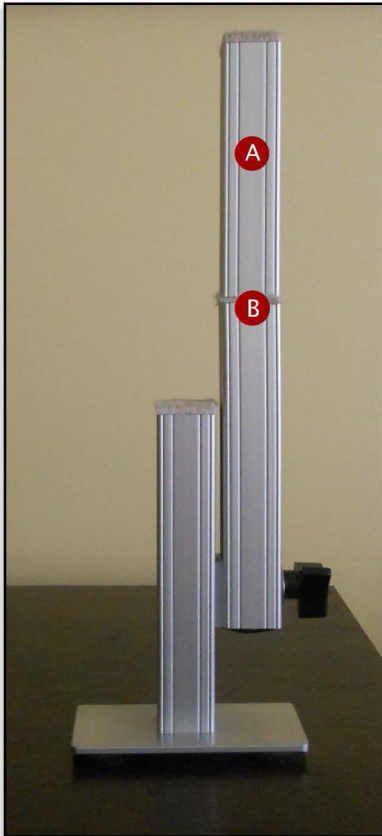
Place the adjustable leg under the work surface and loosen the adjustable leg brake. Only loosen the brake by a turn or two, to much and the brake will disengage from the slot.

Extend the adjustable leg until it engages the bottom of the work surface and then tighten the adjustable leg brake.

The leg is shipped with the **extension section** installed to give you additional height adjustment. If this is too tall for your application, simply **unscrew the extension section**.

A Extension Selection

B screws into here



ALWAYS REMOVE LEG BRACE BEFORE LOWERING THE WORK SURFACE.



Stabilization leg shown without the Extension Selection

